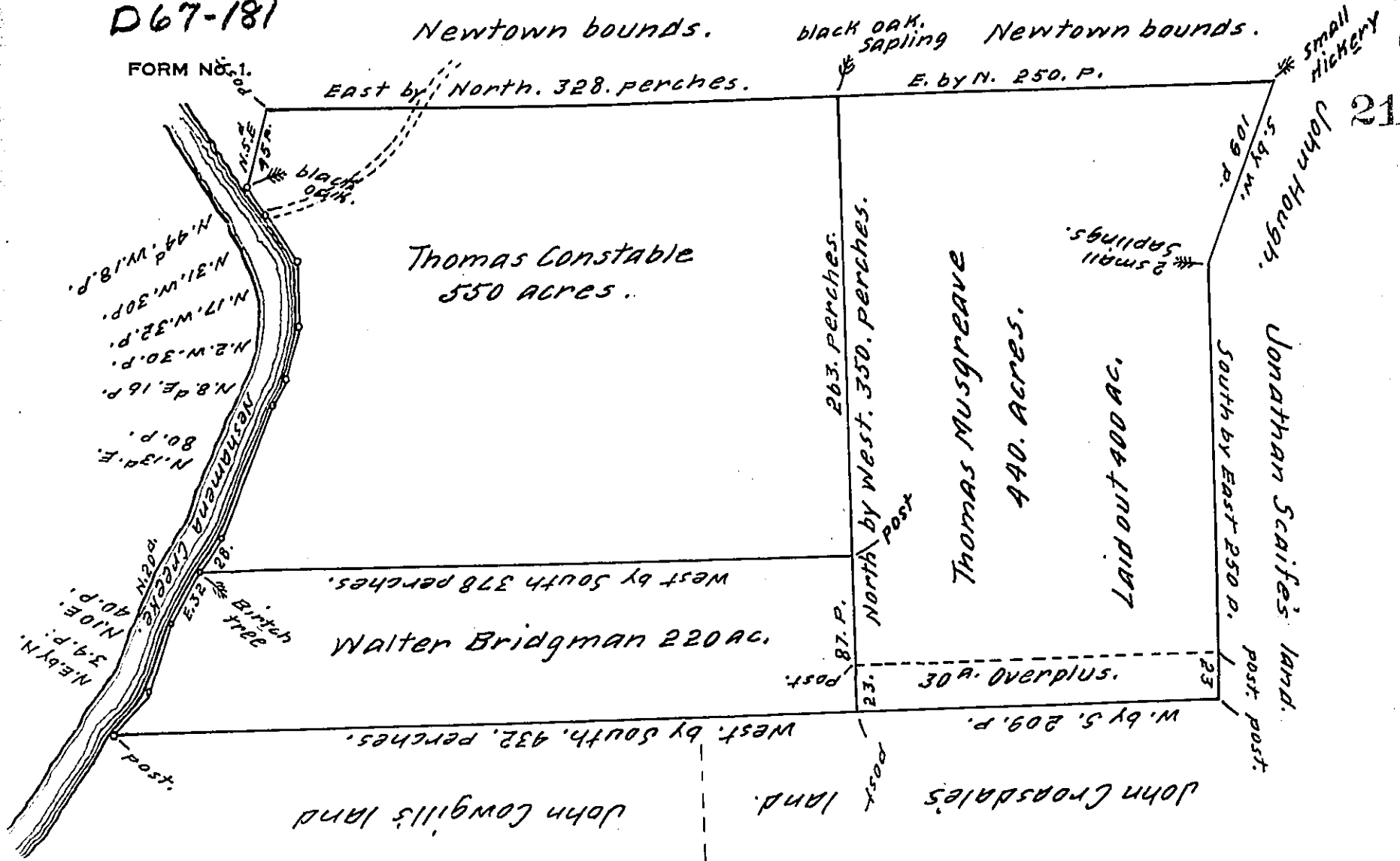


D67-181



By Virtue of a Warrt from the Proprietaries Commrs. to me directed bearing date the 26<sup>th</sup> <sup>18<sup>th</sup></sup>/<sub>1770</sub> 1702 to Resurvey unto the Heir and Children of Thomas Musgreave deceased. A certaine tract of land on Neshamenah Creek in Bucks County reputed to Containe 400 acres Laid out to Henry Bayley in part of his original purchase of 1500 ac. Resurveyed to the sd. User the sd. tract lying in Middle town in Bucks County beginning at a Post at Jonathan Scaifes Corner. Thence by John Crossdales land W. by S. 209 per. to a Post Then by Walter Bridgman & Thomas Constables land. N. by W. 350 per. to a black oak sapling. Then by Newtown bounds E. by N. 250 per. to a small Hickery. Then by John Hough's land S. by W. 109. p. to two small Saplings at Jonathan Scaifes other Corner. Then by the sd. Scaifes line S. by E. 250 perches to the beginning. Containing 470 acres. Resurveyed the 8<sup>th</sup> <sup>14<sup>th</sup></sup>/<sub>1770</sub> 1704.

By me John Cutler.

At the Request of Nicholas Wallen Attorney to Thomas Constable & Trustee to Walter Bridgman divided these two Tracts to the sd. Constable & Bridgman's heires [being formerly Resurveyed and returned in one tract] The Division line beginning at a Post in Musgreaves line Eighty seven perches from John Crossdales line. Thence West by South three hundred seventy Eight perches to a Birtch tree by Neshamenah Creek. the rest of the Courses and Distances as upon the Draught. Constables tract Containing 550 acres. Bridgmans Containing 220 acres. Divided the 8<sup>th</sup> <sup>14<sup>th</sup></sup>/<sub>1770</sub> 1704.

By me John Cutler.

IN TESTIMONY that the above is a copy of the original remaining on file in the Department of Internal Affairs of Pennsylvania, made conformably to an Act of Assembly approved the 16th day of February, 1833, I have hereunto set my Hand and caused the Seal of said Department to be affixed at Harrisburg, this thirteenth day of January 1909.

Henry Horack  
Secretary of Internal Affairs.